



GATES CHILI

CENTRAL SCHOOL DISTRICT

Special Edition 2022

Proposed improvements to have no planned tax impact

Dear Gates Chili School Community,

Building brighter futures for our students begins with Gates Chili facilities. Our facilities are a point of pride for our community. We take seriously our commitment to provide the safest and most comfortable building environments possible for our staff and students. These facilities set the stage for all the great learning and activities that take place in our district.

To honor this commitment, our administration and Board of Education have been working with district stakeholders, as well as our architects and construction management firm, to plan for the best strategic investments in these facilities. The long-term future of our learning community is dependent upon your support.

On Feb. 2, we are asking our community to vote on our next proposed capital project. The scope of the work includes upgrades, improvements, and routine maintenance at Florence Brasser Elementary School, Gates Chili High School, Gates Chili Middle School, and the Gates Chili Administration Building, which would become a Universal Prekindergarten (UPK) Center.

A Building Condition Survey completed by our architects this year identified many items at these sites that are in need of repair, replacement, safety upgrades and better accessibility for people with disabilities.

This proposed capital project will be funded entirely by capital reserve funds and available state building aid. Thus, we anticipate it will have no additional tax impact or increase.

We invite eligible community members to take part in the vote on Wednesday, Feb. 2 from 6 a.m. to 8 p.m. at the Gates Chili High School Field House. Please take a moment to review the information in this newsletter, visit our website at gateschili.org/CapitalProject and/or attend the public hearing on Tuesday, Jan. 25 at 6:30 p.m. at Gates Chili High School in the Library Mezzanine.

By working together, we can build a brighter future for our students. We hope to see you on Feb. 2 for the community vote!

Sincerely,

Christopher J. Dailey
Superintendent of Schools

Mitchell J. Ball, Ed.D.
Assistant Superintendent for Business

Jeffrey Pettenski
Board of Education President

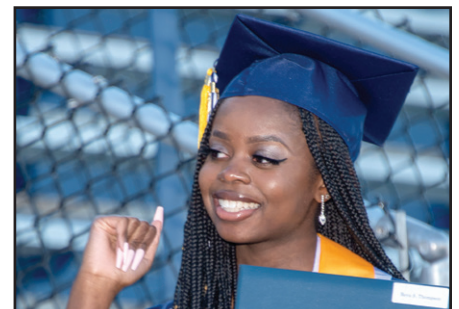
Christine Brown Richards, Ed.D.
Board of Education Vice President

CAPITAL PROJECT VOTE

2.2.22

HS Field House

NO TAX IMPACT



Building Brighter Futures

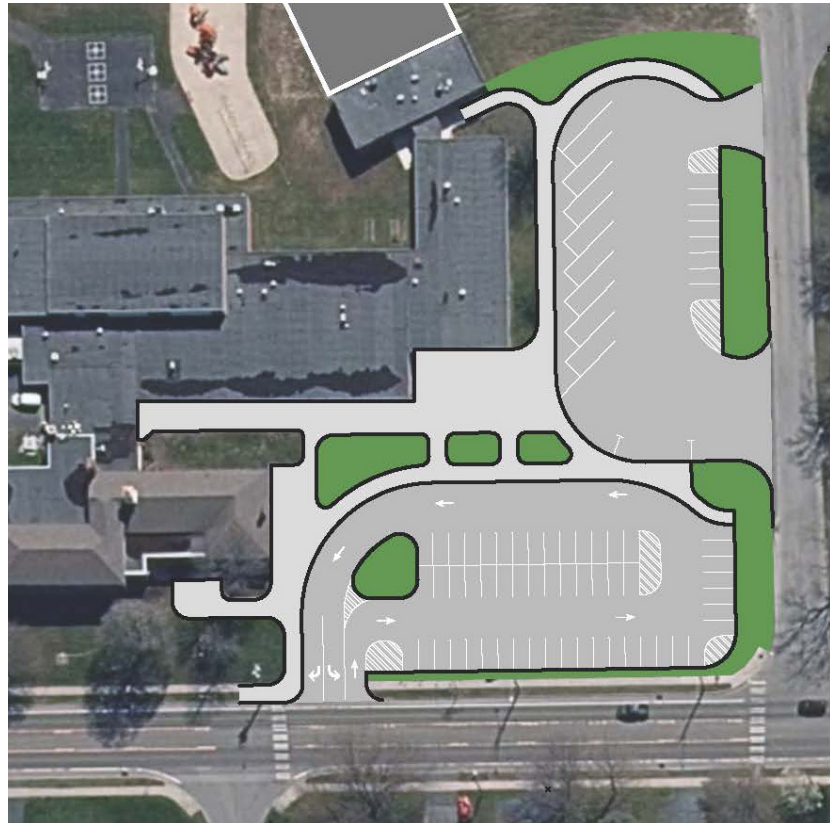


Together we teach and inspire excellence for all learners.

Florence Brasser Elementary School upgrades

Any parent/guardian who has ever dropped off or picked up their student at Florence Brasser Elementary School knows the trials and tribulations of the traffic pattern there. This portion of the proposed capital project would revise the bus loop and traffic pattern for pick-up and drop-off and create additional parking for staff and visitors. The improved traffic pattern would create a safer environment for staff, students and families, while also alleviating traffic concerns for neighbors in the area.

In the last capital project, elementary school security was upgraded with the addition of new, secure main entry points. Although Brasser has a secure main entry, this phase of the project would increase safety and security by relocating the main office and secure entry to a different part of the building. This means several classroom spaces would be relocated to the site of the current main office. This move would improve accessibility under the Americans with Disabilities Act (ADA). Additionally, this phase of the proposed project would address several priority items from the 2021 Building Condition Survey including ventilation/HVAC upgrades, generator/electrical upgrades, and fire alarm and lighting upgrades.



Proposed pick-up/drop-off reconfiguration for improved student safety and traffic circulation

**NO TAX
IMPACT
CAPITAL
PROJECT**

2.2.22
6 a.m. to 8 p.m.
HS Field House

SCOPE OF WORK:

- -RELOCATE MAIN OFFICE
- -RELOCATE AIS/CLASSROOM
- REVISE BUS LOOP AND PARKING
- ADDRESS PRIORITY INITIATIVES FROM 2021 BUILDING CONDITIONS SURVEY



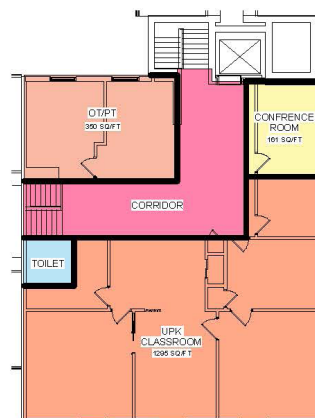
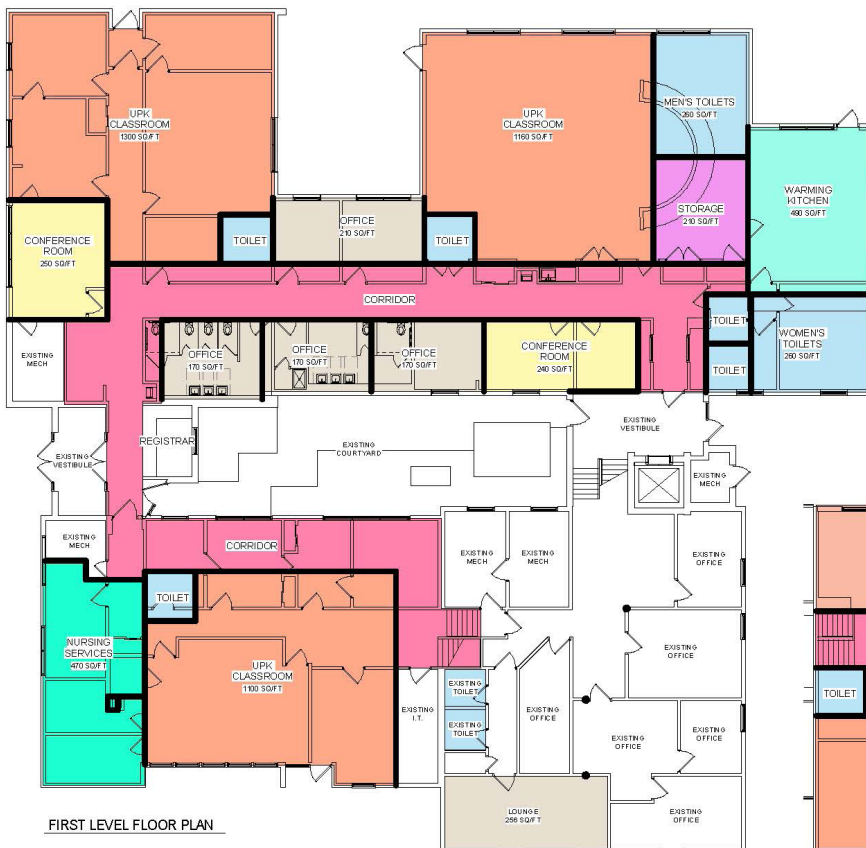
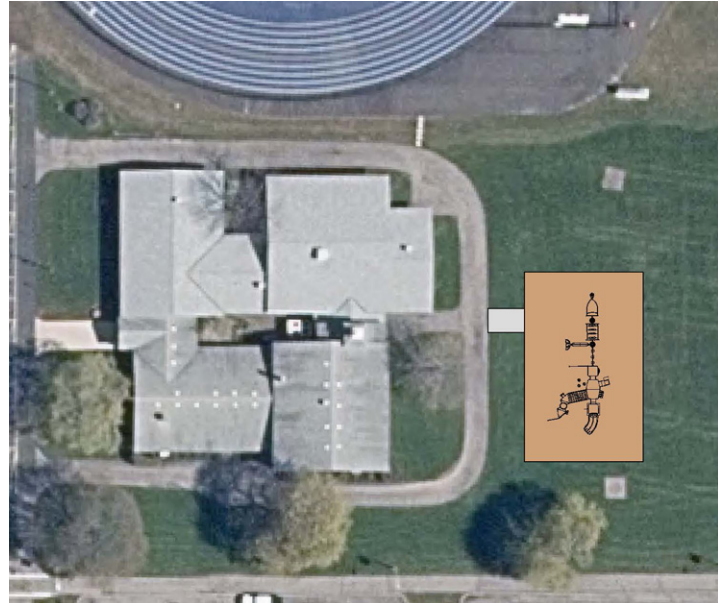
For more information about the proposed capital project, go to gateschili.org/CapitalProject

Creation of Prekindergarten Center at current Admin. Building

Investing in our youngest learners is paramount. This phase of the proposed project would bring four prekindergarten classrooms of students back to the district.

The plan involves converting most of the current Administration Building into a Prekindergarten Center. This space would feature four classrooms complete with secure entry, bathrooms, a nurse's office and a space for occupational and physical therapy. In addition, this phase would address priority initiatives from the 2021 Building Condition Survey, including generator/electrical, as well as drainage upgrades to the entire campus. The conversion of this building would cause some central office staff to be relocated to the high school.

As it is adjacent to Spartan Stadium, this phase of the proposed project would also put in place support facilities for our wonderful stadium by integrating a concession stand and restrooms in this building for use by event attendees.



CAPITAL PROJECT VOTE

2.2.22

**6 a.m. to 8 p.m.
HS Field House**

NO TAX IMPACT

For more information about the proposed capital project, go to gateschili.org/CapitalProject

High school and middle school arts and technology upgrades

**NO TAX
IMPACT**

Arts and technology play an integral role in the Gates Chili curriculum. These disciplines create important opportunities for students to receive a well-rounded education that prepares them for life beyond high school.

The existing art and technology spaces at Gates Chili High School and Gates Chili Middle School are outdated and lack the physical layout to support our programs in an efficient manner. This phase of the proposed project would bring these spaces up to 21st-century standards. Technology classrooms at both schools would receive enhanced technological interfaces, better layouts for new programs and teaching methods, integrated clean rooms and production spaces, and a brighter, more welcoming appearance. Meanwhile, as our music program continues to thrive and grow the middle school would receive updated band, choral and practice spaces that are larger, brighter, and designed to accommodate a multitude of different programs from small groups to full-scale band and choral rehearsals, preparing students as they move into their GCHS pathways.

Building Condition Survey items in these schools include: ventilation/HVAC upgrades at both schools; select roof replacement, flooring abatement and exterior door replacements at Gates Chili High School; and water heater replacement and upgrades to lighting and the public address system at Gates Chili Middle School. This phase also includes the relocation of some central office staff to the high school due to the conversion of the Administration Building into a Prekindergarten Center. These staff members would be housed in the former site of Westside Academy, which will be vacated upon completion of the Gates Chili Performing Arts Center.

Gates Chili Middle School

SCOPE OF WORK:

- RENOVATE MUSIC / TECHNOLOGY CLASSROOMS
- CONSTRUCT MULTI-PURPOSE FIELD AND ADDITIONAL PARKING
- ADDRESS PRIORITY INITIATIVES FROM 2021 BUILDING CONDITIONS SURVEY



Gates Chili High School

SCOPE OF WORK:

- RENOVATE TECHNOLOGY CLASSROOMS
- RELOCATE ADMINISTRATIVE OFFICES
- ADDRESS PRIORITY INITIATIVES FROM 2021 BUILDING CONDITIONS SURVEY



For more information about the proposed capital project, go to gateschili.org/CapitalProject

District athletic field upgrades

Physical education and athletics are an important part of the educational experience at Gates Chili, allowing students and student-athletes to challenge themselves both physically and mentally.

This phase of the proposed project features the construction of a multi-purpose field south of Gates Chili Middle School. This field would be used for various sports including baseball, softball, lacrosse, and soccer. Similar to Spartan Stadium, this field would provide students and student-athletes the opportunity to utilize fields regardless of weather conditions. With the construction of the multi-purpose field, there are also plans to create additional parking for staff and event attendees. As with other Gates Chili facilities, this space would be available for community group use.

The phase of the proposed project that involves the Prekindergarten Center also includes the creation of concessions and restrooms in the current Administration Building for use by event attendees at Spartan Stadium.



Frequently asked questions

How can you accomplish this project without impacting my taxes?

The funding for this project has already been secured in the forms of Gates Chili Central School District's capital reserve fund, which will cover approximately 33%, and state building aid, which will cover approximately 67%. The explicit purpose of the capital reserve fund is to complete capital project work such as this and it cannot be used to pay for other things. Based on the current state aid regulations and the processes set in place, it is anticipated that state building aid would cover the remainder of the costs not covered by capital reserves.

Isn't State Aid just my tax dollars, too?

Yes, it is. The New York State Legislature has given all districts an opportunity to use tax dollars collected across the state to enhance their communities through school building improvements and renovations. This is an opportunity to keep some of those tax dollars in our own community, improving safety and the overall educational setting for our students.

Why is the project needed?

There are several items at the sites indicated in this newsletter that need to be addressed before they become hazardous and unsafe for faculty and students. Many of these items were identified in our 2021 Building Condition Survey completed by the district architects and include restrooms, roofs and making our facilities compliant with the Americans with Disabilities Act (ADA).

NO TAX IMPACT

Why doesn't the district just include these items in the annual budget?

By creating a capital project from the work that needs to be done, the district would receive state building aid back on nearly every dollar spent. Without that reimbursement from New York State, the entire cost would rest on the taxpayers.

How can I learn more about the proposed project?

We encourage the community to attend the public hearing on Tuesday, Jan. 25 at 6:30 p.m. at Gates Chili High School in the Library Mezzanine. Additional information can be found on the district website at gateschili.org/CapitalProject. For additional questions, please email communications@gateschili.org.

When and where do I vote?

The vote will take place on Wednesday, Feb. 2, 2022, from 6 a.m. to 8 p.m. in the Gates Chili High School Field House.

How do I find out if I'm eligible to vote?

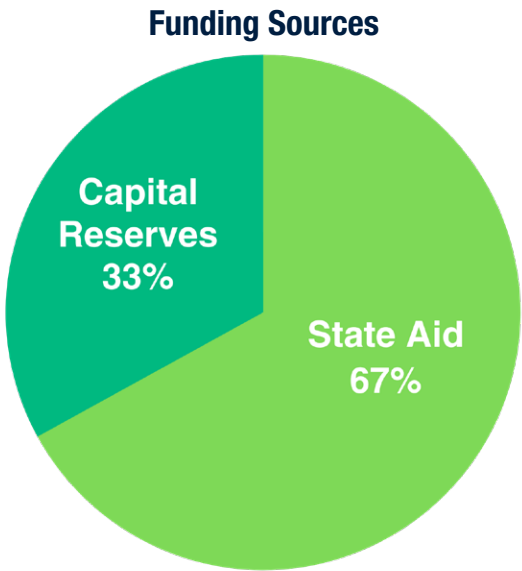
Check out page 8, the back cover, of this newsletter for important voter information.

For more information about the proposed capital project, go to gateschili.org/CapitalProject

Funding the project with no tax impact

The proposed plan for this project includes no additional tax impact to the Gates Chili school community.

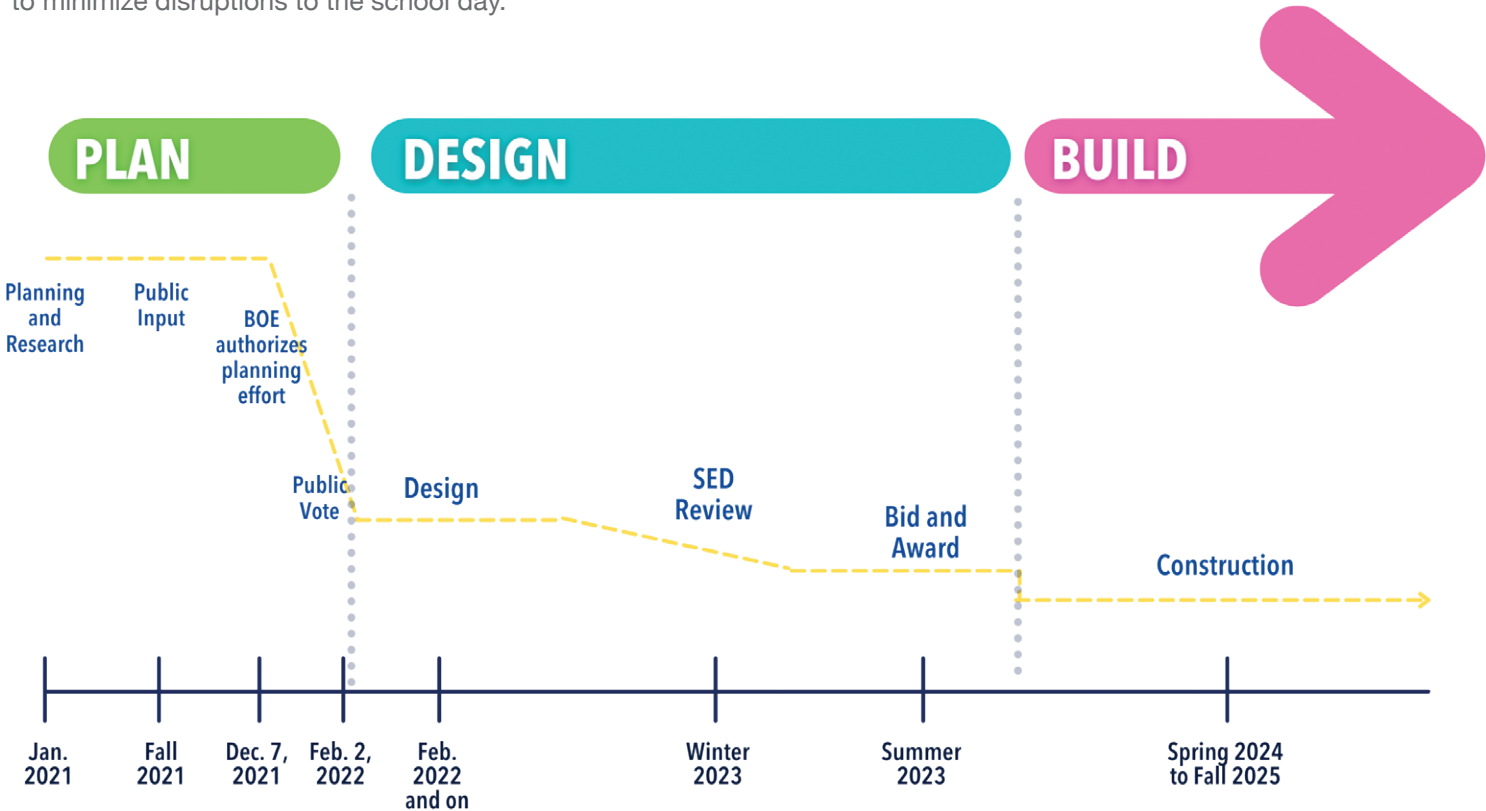
The total referendum authorization amount for the project is \$45,500,000. The capital reserve fund will cover \$15,000,000 of the cost, and the remainder will be reimbursed by State Building Aid.



Proposed project schedule

Just as the district is required to seek voter authorization for its annual operating budget, any time a school district in New York State proposes a capital improvement project, a public referendum, or vote, is necessary.

If approved, the plans and specifications for this capital project would need to be completed by the architects and engineers and submitted to New York State for approval. The State Education Department issues the official building permit for our facilities. This process and approval from the state can take up to, or even more than, one year, so it is anticipated that construction would begin in the spring of 2024 and continue through the fall of 2025. The construction schedule would seek to minimize disruptions to the school day.



For more information about the proposed capital project, go to gateschili.org/CapitalProject

Proposition on the ballot

The following text will appear on the ballot for voter consideration:

Shall the following resolution be adopted to wit:

Resolved that the Board of Education of the Gates Chili Central School District is hereby authorized to undertake certain capital improvements consisting of additions to, and construction and reconstruction of, existing school buildings and facilities, site improvements and the acquisition of certain original furnishings, equipment, and apparatus and other incidental improvements required in connection therewith for such construction and school use, all at an estimated maximum aggregate cost of \$45,500,000; and to appropriate and expend from the existing capital reserve fund \$15,000,000 for such costs, and that the balance of such cost, or so much thereof as may be necessary, shall be raised by the levy of a tax to be collected in annual installments, with such tax to be offset by state aid available therefor; and, in anticipation of such tax, debt obligations of the school district as may be necessary not to exceed \$30,500,000 shall be issued.

**CAPITAL
PROJECT VOTE**

NO TAX IMPACT

**2.2.22
HS Field House**

Past and ongoing capital projects

In October 2017, the community supported a districtwide capital improvement project to renovate its schools. That project is now near completion. The project included work at every school throughout the district.

At Paul Road Elementary School, crews added a secured entry, enhanced the nurse's office, updated heating systems and restrooms, and added new playground components. At Florence Brasser Elementary School, workers added two new classrooms, updated heating systems, and added new age-appropriate playgrounds. Staff and students at Neil Armstrong and Walt Disney elementary schools were greeted with updates to those two buildings on the first day of school this fall. Items at those sites included a freshly-paved driveway and parking lot, heated sidewalks, secured entrances, classroom wing renovations, and updated support spaces.

At Gates Chili Middle School, the architects worked with our team to create a "main street" that features a new art room, family and consumer sciences (FACS) classrooms, a new counseling suite and much more. Meanwhile, at Gates Chili High School, crews are expecting to complete the majority of the work on the new Gates Chili Performing Arts Center in the coming weeks.



The space will feature seating for more than 1,000 audience members, a greatly-enhanced performance stage with full fly space, state-of-the-art sound and lighting systems, dressing rooms, and a welcoming lobby with a concession. Crews also updated the band and choral spaces, including new practice rooms and integrated a dance component. This area of campus also now includes a brand-new parking lot that features charging stations for electric vehicles.

To see past published updates on capital project work, go to gateschili.org/newsletter.

For more information about the proposed capital project, go to gateschili.org/CapitalProject



GATES CHILI CENTRAL SCHOOL DISTRICT

3 Spartan Way
Rochester, New York 14624
585.247.5050

Board of Education

Jeffrey Pettenski, *President*
Christine Brown Richards, Ed.D., *Vice President*
Michael Bailey
Catherine Coffee
Kerri Keyes
Nicole Littlewood
Robert Long
Francis Muscato
Andrea Hinchey Unson

Superintendent of Schools

Christopher J. Dailey

Assistant Superintendent for Business

Mitchell J. Ball, Ed.D.

Director of Communications, Editor

Iva Petrosino

Graphic Designer

Lisa Constantine

www.gateschili.org

Designed and printed at Monroe 2-Orleans BOCES

Non-Profit Org.
U.S. Postage
PAID
Rochester, NY
Permit No. 1034

CAPITAL PROJECT VOTE

2.2.22
HS Field House



NO TAX IMPACT

Voter eligibility

Anyone who is at least 18 years old, a U.S. citizen and a resident of the Gates Chili Central School District for at least 30 days prior to the Feb. 2, 2022 vote is eligible. You do not need to be registered to vote, but you must bring identification and proof of residency.

Proof of residency

The school district may require all persons offering to vote at the budget vote and election to provide one form of proof of residency pursuant to the Education Law §2018-C. Such form may include a driver's license, a non-driver identification card, a utility bill or a voter registration card. Upon offer of proof of residency, the school district may also require all persons offering to vote to provide their signature, printed name and address.

Absentee ballots

Residents unable to vote because of disabilities, illness, travel or other reasons listed as valid under election law, may request applications for absentee ballots at Gates Chili Central School District Administration Building, 3 Spartan Way, or by calling the district clerk at 247-5050 ext. 12101. Once the application is approved, an absentee ballot will be mailed or can be picked up. Completed absentee ballots must be received by the district clerk's office no later than 5 p.m. on Wednesday, Feb. 2, 2022.

**For more information about the proposed project,
go to gateschili.org/CapitalProject**

Stay Connected!



@GatesChiliInfo #GCPrize #GCCares